



# MultiTouch Cell Advanced

Multitouch LCD for modular display arrays

**MT467 MultiTouch Cell 46" Advanced Full HD LCD**

**MT469 MultiTouch Cell 46" Advanced High Brightness Full HD LCD**



Now slimmer and lighter than ever, MultiTouch Cell Advanced offers unprecedented functionality for large interactive display installations. Multi-Touch Cells are used for several purposes such as retail, digital signage, exhibitions, museums, education and design.

## MultiTouch Cell Advanced

- 46" LCD. Depth 299 mm/11.77", weight 37 kg (81.6 lbs)
- VESA mounting
- units can be combined into one large display array
- stackable and movable
- inclinable into any position
- Full HD, 1920-by-1080p-pixel resolution (2,1 MP)
- 60,000+ hours expected life-time
- low maintenance, scratch-resistant front glass

## All display models of MultiTouch Ltd

- are multiuser multitouch displays
- MultiTouch Computer Vision Through Screen (CVTS) recognizes finger tips, fingers, hands and objects
- can be set up as table and wall displays
- can be used in portrait or landscape orientation
- work on Mac, Linux and Windows environments
- use MultiTouch Cornerstone Engine with available software development kit.

### /// Multitouch

Multiple persons can use MultiTouch Cells at the same time. The software tracks every user's hands instead of points of contact only.

### /// Full HD LCD

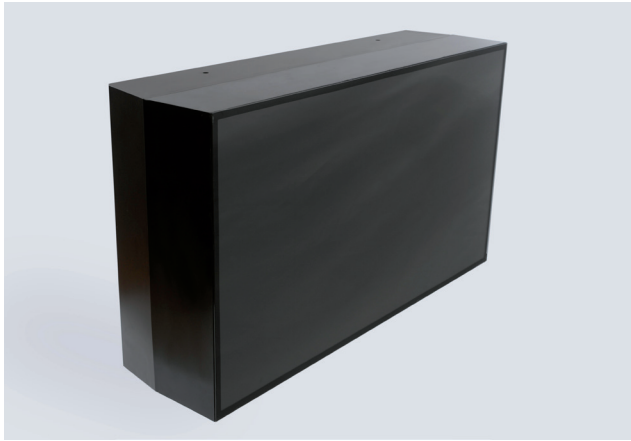
Full HD LCD has a high picture quality, long lifespan and minimal maintenance requirements.

### /// Modular

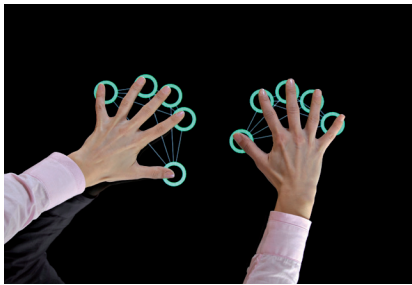
You can connect MultiTouch Cells to each other and create a single large display array showing content split to different cells.



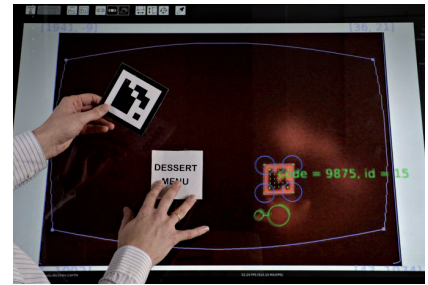
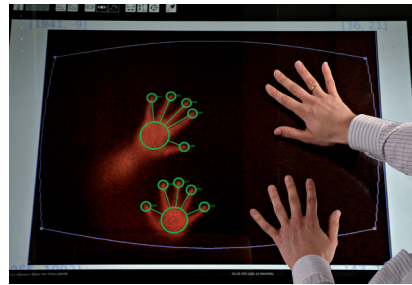
# MultiTouch Cell Advanced



Advanced Cells are 1052 mm (41.42 inches) wide, 605 mm (23.82 inches) high and 299 mm (11.77 inches) deep with professional cooling and VESA mounts.



Multitouch Cornerstone software tracks several hands, not only individual fingers.



Physical objects can be recognized with optical markers.



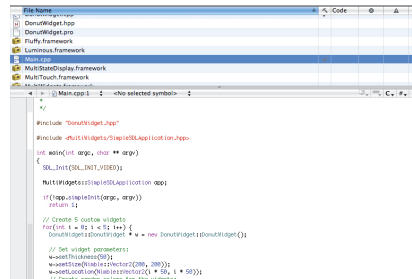
MultiTouch Cell Advanced is a multi-user wall or table that can be used in different environments.



MultiTouch Cell Advanced is especially good as a table. It applies to your own table design easily.



2-24 Cells can be combined together for a large video wall with directed speakers.



Software development kit is available. Support for TUIO, XML stream and Windows 7 Touch included.



Inclinable table stand available.



# MT467 MultiTouch Cell 46" Advanced Full HD LCD

# MT469 MultiTouch Cell 46" Advanced High Brightness Full HD LCD

## Specifications

### Display Specifications

Display Technology	TFT LCD
Display Size	46" 16:9 Wide
Native Resolution	Full HD 1920 x 1080
Display Colors	16.7 million
DisplayActiveArea	1018mm x 573mm
Pixel Pitch	0.530 mm
Pixel Response Time	8 ms gray-to-gray
Brightness	MT467 300 CD/m <sup>2</sup> / MT469 500 CD/m <sup>2</sup>
Contrast Ratio	3000:1
Picture Frame Rate	60 Hz
Backlight	LED Matrix Array
Viewing Angle	178

### Touch Sensing Hardware

Touch technology	Optical, diffuse infrared through LCD
Amount of cameras	2 hardware synchronized cameras
Camera Interface	IEEE 1394, (FireWire 400)
Camera Type	B/W with IR pass Filters
Tracking Speed	Up to 100 Hz
IR Source	IR LED Array
IR Wavelength	850 nm

### Touch Surface

Display Safety Glass	Tempered 4mm Optiwite Glass covering whole front surface
----------------------	--

### Interfaces

Video Input	DVI-D, VGA, Composite
Control Input	USB B
Camera Connector	IEEE 1394 (FireWire 400) 6 pin
Power Connector	IEC C14

### Electrical Specifications

Power Supply	100-240 VAC, 50/60 Hz
Power Consumption	MT467 300 W typical / 400 W max MT469 450 W typical / 500 W max

### Touch Details <sup>1)</sup>

Tracking Software	MultiTouch Cornerstone Engine included (installed on a connected computer <sup>2)</sup> )
Touch Input Types	Single finger, multiple fingers, single hand, multiple hands and users, objects with optical markers. Click, hold and drag.
Hand Recognition	Each finger identified to certain hand
Object Recognition	Supported with 2D fiducial markers.
Number of Simultaneous Touch Inputs	Unlimited <sup>3)</sup>
Number of Simultaneous Users	Unlimited (separate hands) <sup>4)</sup>
Positional accuracy	5 mm
Relative accuracy	0.5 – 1 mm
Touch Latency	15 ms typical <sup>4)</sup>
Tracking Data Outputs/APIs	Low level C++, TUIO, XML stream, Windows 7 Touch
Operating System Support	Windows 7, Linux, Mac OS X
Development Environment Support	Most major programming languages and environments <sup>5)</sup>
Software Development Kit	Cornerstone SDK available for C++/OpenGL and Flash/AS3
Stackability	Up to 24 Cells can be connected to run a single Multi-touch application <sup>6)</sup>

### Environment Specifications

Operating Temperature	0 to +35 degrees C
Storage Temperature	-10 to +60 degrees C <sup>7)</sup>
Relative Humidity	Non-condensing 80%

### Dimensions and Weight

Physical Dimensions	Width 1052 mm / 41.42 inches Height 605 mm / 23.82 inches Depth 299 mm / 11.77 inches
Bezel width	17 mm / 0.67 inches
Weight	37 kg (81.6 lbs)
Color	Black
Shipping Dimensions	tbd
Shipping Weight	tbd

### Display Mounting

VESA Mount	MIS-F 600 x 400, 4 x M8
Mounting positions	Vertical Horizontal Angled position Table position Display Array 2-14 Units

### Cooling

Cooling system	Forced Air
Convection method	Low Noise Variable Speed Internal Fans
Noise Level	15 - 25 dBA

### Miscellaneous

Agency Approvals	CE
RoHS Compliant	Yes
Expected Life-time	Over 60,000 h
Warranty	1 Year

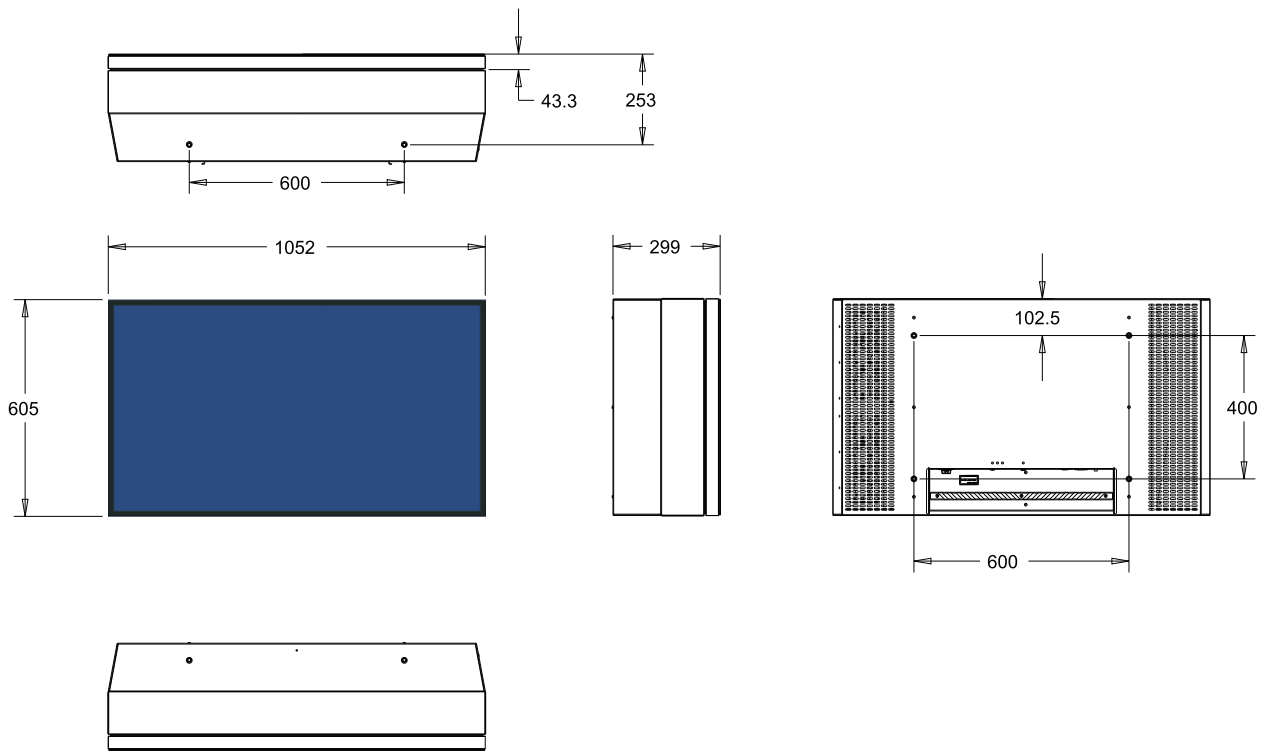
### Sales Package Contents

Display Unit	MT467
Power Cords	5 m, EUR, US, GB
Digital Video Cable	DVI-D 5 m
USB A-B Cable	5 m
FireWire IEEE 1394 6/6 pin	4 m
Product Manual	English version
Warranty Card	
Quick Start Guide	

- 1) When used with MultiTouch Cornerstone tracking software.
- 2) Computer not included. See requirements at <http://cornerstone.multitouch.fi/computer-recommendations>.
- 3) Practically limited by how many people can fit next to the display array.
- 4) Measured from touch to processed tracking data output. Overall latency is greater and depends on the computer, operating system, and application used.
- 5) See MultiTouch Cornerstone data sheet for further details.
- 6) See Compatibility chart for details.
- 7) Allow at least two hours for temperature normalization before switching on the unit.



# MT467/MT469 Dimensions



## /// For commercial enquiries, please contact:

MultiTouch Ltd:  
Email: [sales@multitouch.fi](mailto:sales@multitouch.fi)  
Phone: +358 50 385 5515

MultiTouch Americas:  
Email: [sales-us@multitou.ch](mailto:sales-us@multitou.ch)  
Phone: (408) 455-2905

Official MultiTouch Resellers  
in your area:  
[www.multitouch.fi/partners](http://www.multitouch.fi/partners)